



Promoting Excellence

Inspiring dementia practice



Introduction


This leaflet showcases the wide range of resources which are available to support the diverse role of Dementia Ambassadors across Scotland.

Our aim is to inspire you to use the learning resources, while thinking about how to support dementia learning where you are.

Dementia Ambassadors work in various social and public service settings and work to improve the lives of people with dementia and their families and carers. Ambassadors work closely with colleagues and the wider workforce to support the development of knowledge and skills, increasing awareness and promoting learning opportunities.

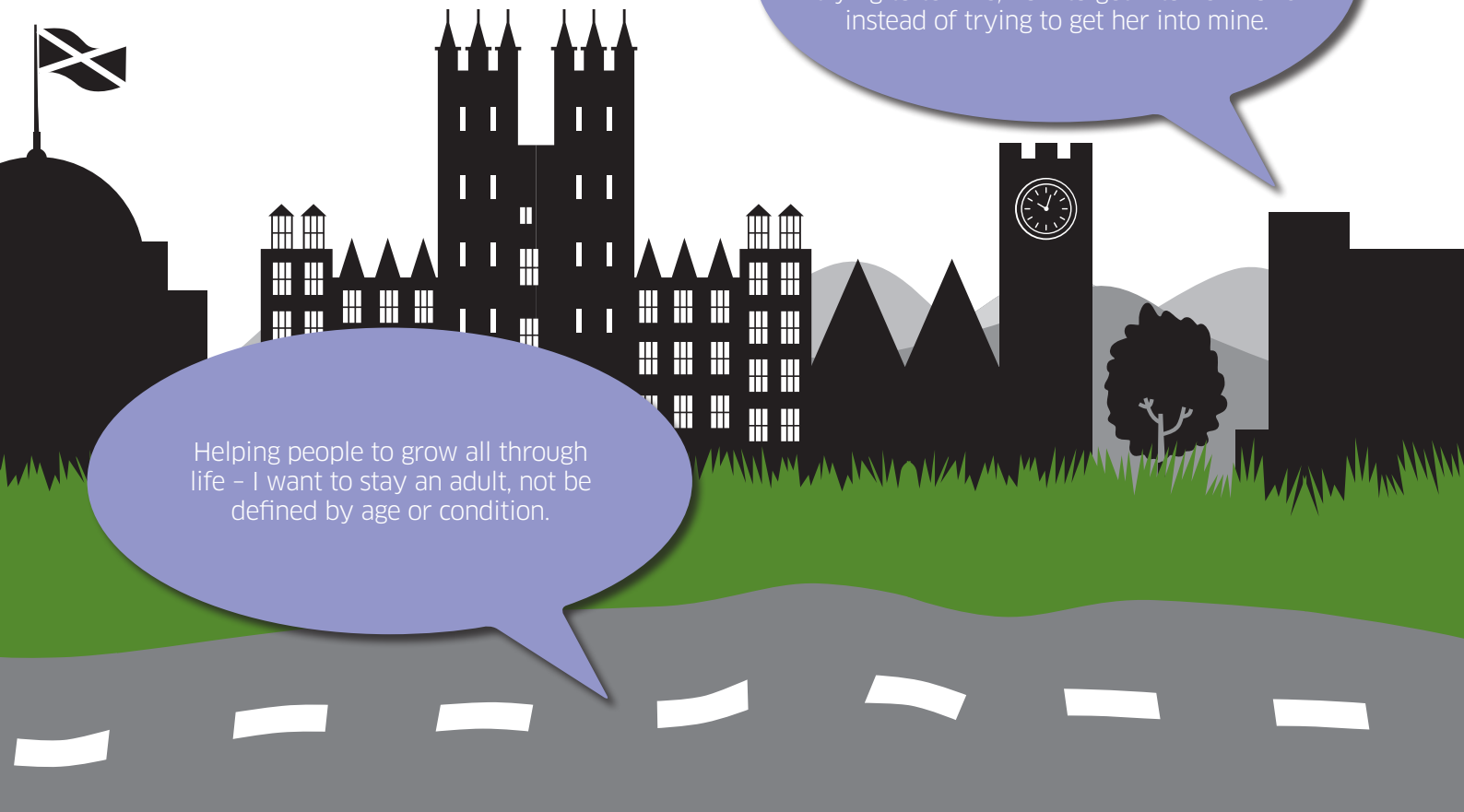
We asked Dementia Ambassadors to share examples of what inspires them at our third Dementia Ambassador National Conference. This leaflet provides a visual snapshot of what they told us.





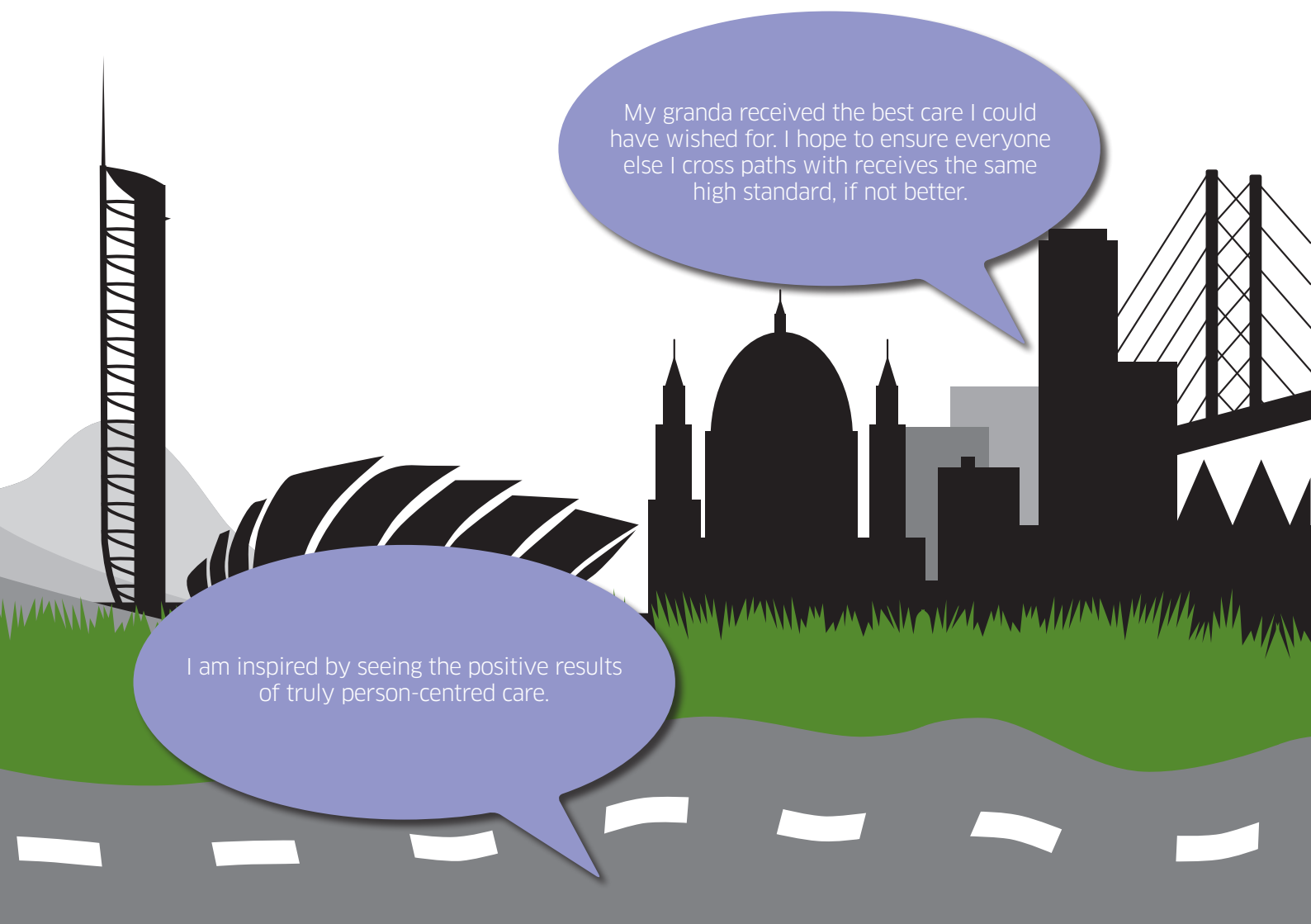
Hugely inspired by one family who made sure their relative was not limited or defined by their dementia, helping him go in a plane (and fly it!). A real inspiration to not limit or keep risk assessing but to enable people to **live** the rest of their lives!

[In the training room] I get the opportunity to meet people who are passionate about delivering care. In this room we learn, discuss and develop both as individuals and as a team.



[One of the first residents I supported] showed me how to listen through her wails, screams and tears; how to **hear** what she was trying to tell me; how to get into her world instead of trying to get her into mine.

Helping people to grow all through life – I want to stay an adult, not be defined by age or condition.

An illustration of a city skyline in silhouette against a white background. The skyline includes a tall tower on the left, a domed building in the center, and a bridge on the right. In the foreground, there is a green grassy area and a grey road with white dashed lines. Two purple speech bubbles are overlaid on the scene. The top speech bubble contains text about a grandfather's care, and the bottom speech bubble contains text about being inspired by person-centred care.

My granda received the best care I could have wished for. I hope to ensure everyone else I cross paths with receives the same high standard, if not better.

I am inspired by seeing the positive results of truly person-centred care.

What inspires you to improve dementia practice?

Here are some other resources which may be of interest

.....



Dementia:
Understanding dementia



Dementia:
Understanding stress
and distress



Dementia:
Personal outcomes
for people living
with dementia



This guide will introduce you to:

- Step into Leadership www.stepintoleadership.info
- Dementia Managed Knowledge Network www.knowledge.scot.nhs.uk/dementia.aspx
- Dementia Ambassadors www.sssc.uk.com/workforce-development/supporting-your-development/dementia-ambassadors
- Learning Zone learn.sssc.uk.com

Promoting Excellence levels

Informed

The dementia informed practice level outlines the baseline knowledge and skills required by everyone working in health and social service settings, including in a person's own home.



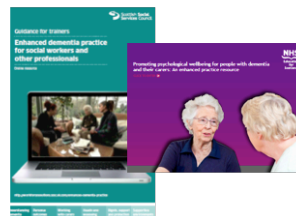
Skilled

The dementia skilled practice level outlines the knowledge and skills required by all workers that have direct and/or substantial contact with people with dementia and their families and carers.



Enhanced

The enhanced dementia practice level outlines the knowledge and skills required by workers that have more regular and intense contact with people with dementia, provide specific interventions or manage services.



Expertise

The expertise in dementia practice level outlines the knowledge and skills required for workers who by virtue of their role and practice setting play an expert specialist role in the care, treatment and support of people with dementia.



Other resources

Guidance to accompany Dementia Skilled - Improving Practice

The impact of Promoting Excellence in social service settings

www.sssc.uk.com/workforce-development/supporting-your-development/promoting-excellence-in-dementia-care

**Scottish Social Services Council
Compass House
11 Riverside Drive
Dundee
DD1 4NY**

**Phone: 0345 60 30 891
Fax: 01382 207215
Email: enquiries@sssc.uk.com
www.sssc.uk.com**

promotingexcellence@sssc.uk.com

**If you would like this document in another format,
please contact the SSSC on 0345 60 30 891**

November 2018